



CERNIERE  
PER ANTE  
BATTENTI  
Hinges  
Swing  
Gates

LIGHTNESS  
*leggerezza*

COMBIARIALDO 29



CATALOGO GENERALE 2017/18  
General Catalogue 2017/18

CERNIERE PER ANTE BATTENTI  
Hinges Swing Gate

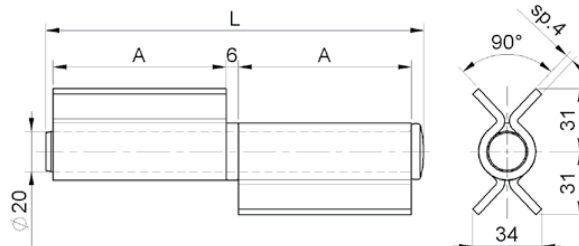
art. 115

Cerniera per cancelli 2 ali aperte con rondella ottone

Large hinge with 2 open wings with brass washer

петля разборная 2 части под сварку с латунной шайбой

Versione INOX/Stainless steel art.115IX pag. 187



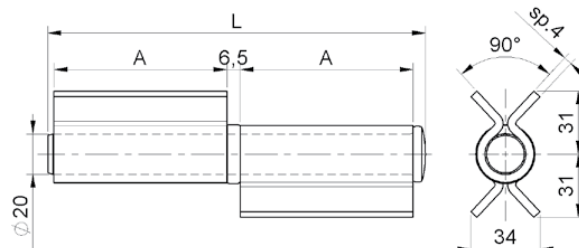
cod.	mm.	pz/pcs	A	L
115.90	90	8	40	94
115.180	180	4	85	185

art. 120

Cerniera per cancelli 2 ali aperte con cuscinetto

Large hinge with 2 open wings with bearing

петля разборная 2 части под сварку с подшипником



cod.	mm.	pz/pcs	A	L
120.90	90	8	40	94
120.180	180	4	85	185

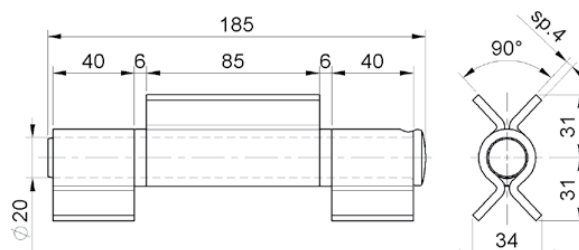
art. 125

Cerniera per cancelli 3 ali aperte con rondelle ottone

Large hinge with 3 open wings with brass washer

петля разборная 3 части под сварку с латунной шайбой

Versione INOX/Stainless Steel art.125IX pag. 187



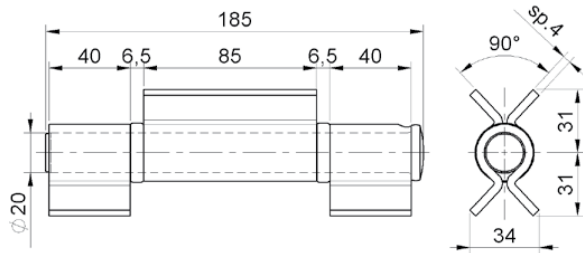
cod.	mm.	pz/pcs
125.180	180	4



**CERNIERE PER ANTE BATTENTI**  
Hinges Swing Gate

art. **130**

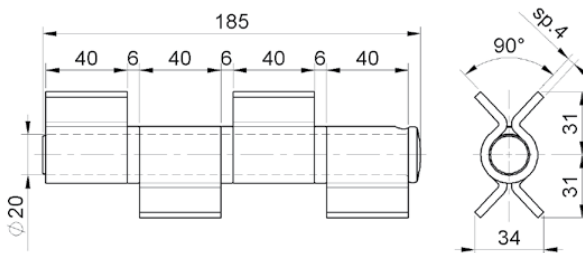
Cerniera per cancelli 3 ali aperte  
con cuscinetto  
*Large hinge with 3 open wings with bearing*  
петля разборная 3 части под сварку с подшипником



cod.	mm.	pz/pcs
130.180	180	4

art. **135**

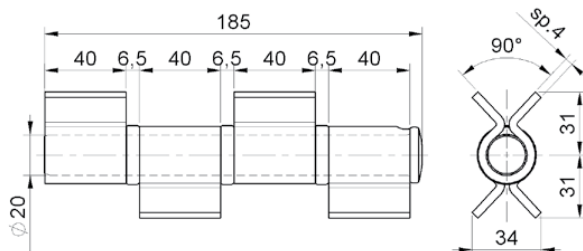
Cerniera per cancelli 4 ali aperte  
con rondelle ottone  
*Large hinge with 4 open wings with brass washer*  
петля разборная 4 части под сварку с латунной шайбой



cod.	mm.	pz/pcs
135.180	180	4

art. **140**

Cerniera per cancelli 4 ali aperte  
con cuscinetti  
*Large hinge with 4 open wings with bearing*  
петля разборная 4 части под сварку с подшипником



cod.	mm.	pz/pcs
140.180	180	4

CATALOGO GENERALE 2017/18  
General Catalogue 2017/18

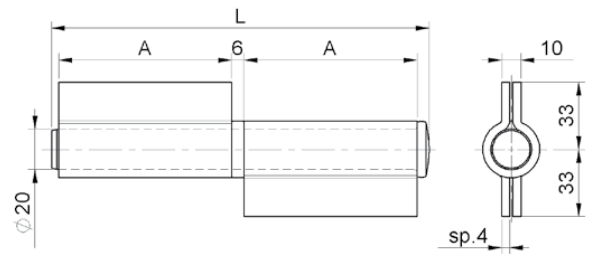


## CERNIERE PER ANTE BATTENTI

Hinges Swing Gate

### art. 145

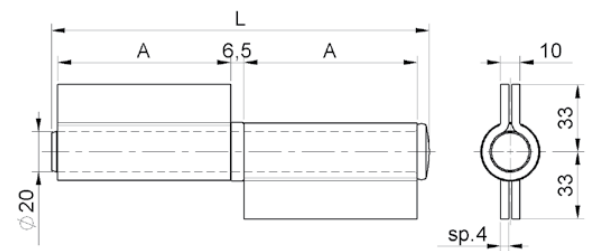
Cerniera per cancelli 2 ali chiuse con rondella ottone  
*Large hinge with 2 close wings with brass washer*  
петля разборная 2 части под сварку с латунной шайбой



cod.	mm.	pz/pcs	A	L
145.90	90	12	40	94
145.180	180	6	85	185

### art. 150

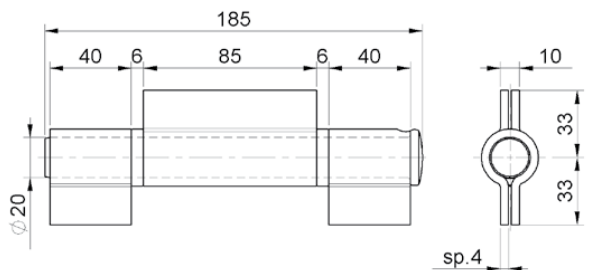
Cerniera per cancelli 2 ali chiuse con cuscinetto  
*Large hinge with 2 close wings with bearing*  
петля разборная 2 части под сварку с подшипником



cod.	mm.	pz/pcs	A	L
150.90	90	12	40	94
150.180	180	6	85	185

### art. 155

Cerniera per cancelli 3 ali chiuse con rondelle ottone  
*Large hinge with 3 close wings with brass washer*  
петля разборная 3 части под сварку с латунной шайбой



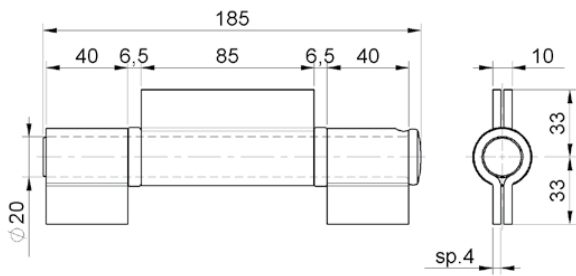
cod.	mm.	pz/pcs
155.180	180	6



**CERNIERE PER ANTE BATTENTI**  
Hinges Swing Gate

art. **160**

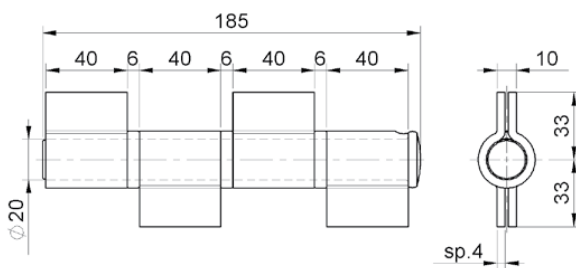
Cerniera per cancelli 3 ali chiuse con cuscinetti  
*Large hinge with 3 close wings with bearing*  
петля разборная 3 части под сварку с подшипником



cod.	mm.	pz/pcs
160.180	180	6

art. **165**

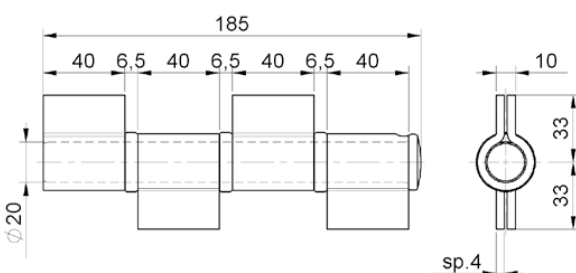
Cerniera per cancelli 4 ali chiuse con rondelle ottone  
*Large hinge with 4 close wings with brass washer*  
петля разборная 4 части под сварку с латунной шайбой



cod.	mm.	pz/pcs
165.180	180	6

art. **170**

Cerniera per cancelli 4 ali chiuse con perno e cuscinetti  
*Large hinge with 4 close wings with bearing*  
петля разборная 4 части под сварку с подшипником



cod.	mm.	pz/pcs
170.180	180	6

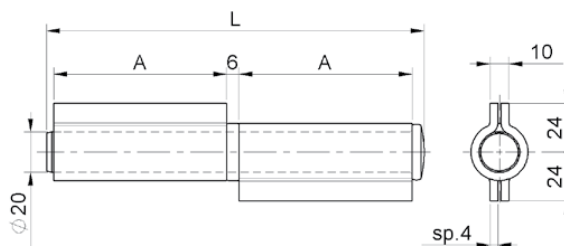


CATALOGO GENERALE 2017/18  
General Catalogue 2017/18

CERNIERE PER ANTE BATTENTI  
Hinges Swing Gate

art. 175

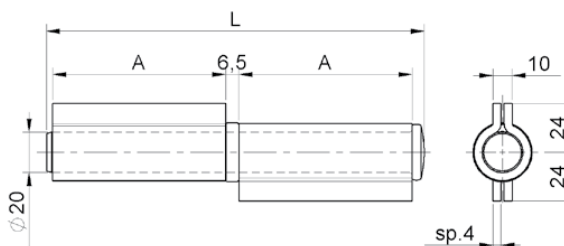
Cerniera per cancelli 2 ali corte con rondella ottone  
Large hinge with 2 short wings with brass washer  
петля разборная 2 части под сварку с латунной шайбой



cod.	mm.	pz/pcs	A	L
175.90	90	12	40	94
175.180	180	6	85	185

art. 180

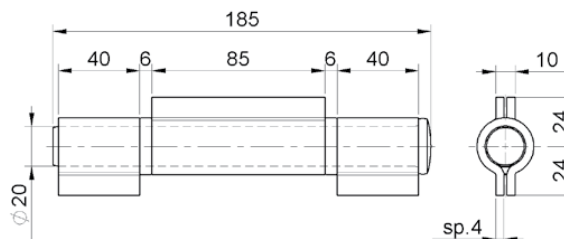
Cerniera per cancelli 2 ali corte con cuscinetto  
Large hinge with 2 short wings with bearing  
петля разборная 2 части под сварку с подшипником



cod.	mm.	pz/pcs	A	L
180.90	90	12	40	94
180.180	180	6	85	185

art. 185

Cerniera per cancelli 3 ali corte con rondelle ottone  
Large hinge with 3 short wings with brass washer  
петля разборная 3 части под сварку с латунной шайбой



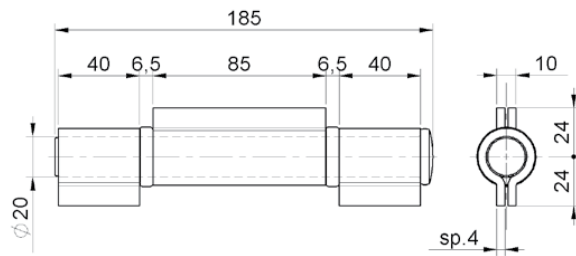
cod.	mm.	pz/pcs
185.180	180	6



**CERNIERE PER ANTE BATTENTI**  
Hinges Swing Gate

art. **190**

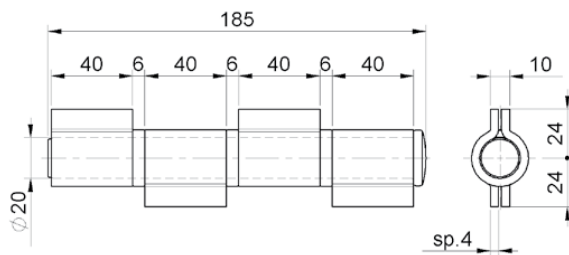
Cerniera per cancelli 3 ali corte con cuscinetti  
*Large hinge with 3 short wings with bearing*  
петля разборная 3 части под сварку с подшипником



cod.	mm.	pz/pcs
190.180	180	6

art. **195**

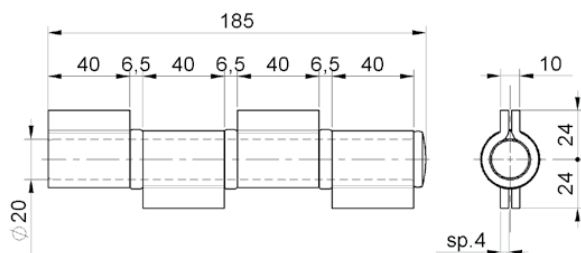
Cerniera per cancelli 4 ali corte con rondelle ottone  
*Large hinge with 4 short wings with brass washer*  
петля разборная 4 части под сварку с латунной шайбой



cod.	mm.	pz/pcs
195.180	180	6

art. **200**

Cerniera per cancelli 4 ali corte con cuscinetti  
*Large hinge with 4 short wings with bearing*  
петля разборная 4 части под сварку с подшипником



cod.	mm.	pz/pcs
200.180	180	6



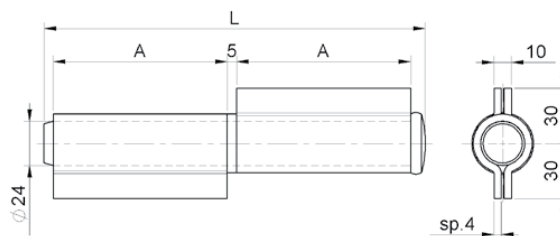


CATALOGO GENERALE 2017/18  
General Catalogue 2017/18

CERNIERE PER ANTE BATTENTI  
Hinges Swing Gate

art. 201

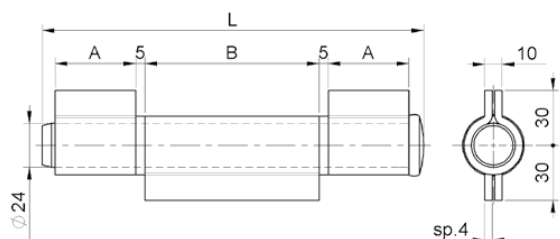
Cerniera gigante 2 ali con rondella ottone  
Large hinge with 2 wings with extractable  $\varnothing 24$  pin  
петля разборная 2 части под сварку с латунной шайбой



cod.	mm.	pz/pcs	A	L
201.200	200	6	95	208
201.300	300	2	145	308

art. 202

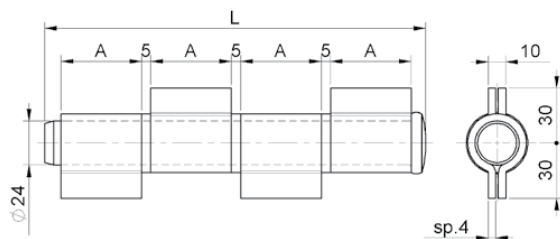
Cerniera gigante 3 ali con rondelle ottone  
Large hinge with 3 wings with extractable  $\varnothing 24$  pin  
петля разборная 3 части под сварку с латунной шайбой



cod.	mm.	pz/pcs	A	B	L
202.200	200	6	44	95	208
202.300	300	2	69	145	308

art. 203

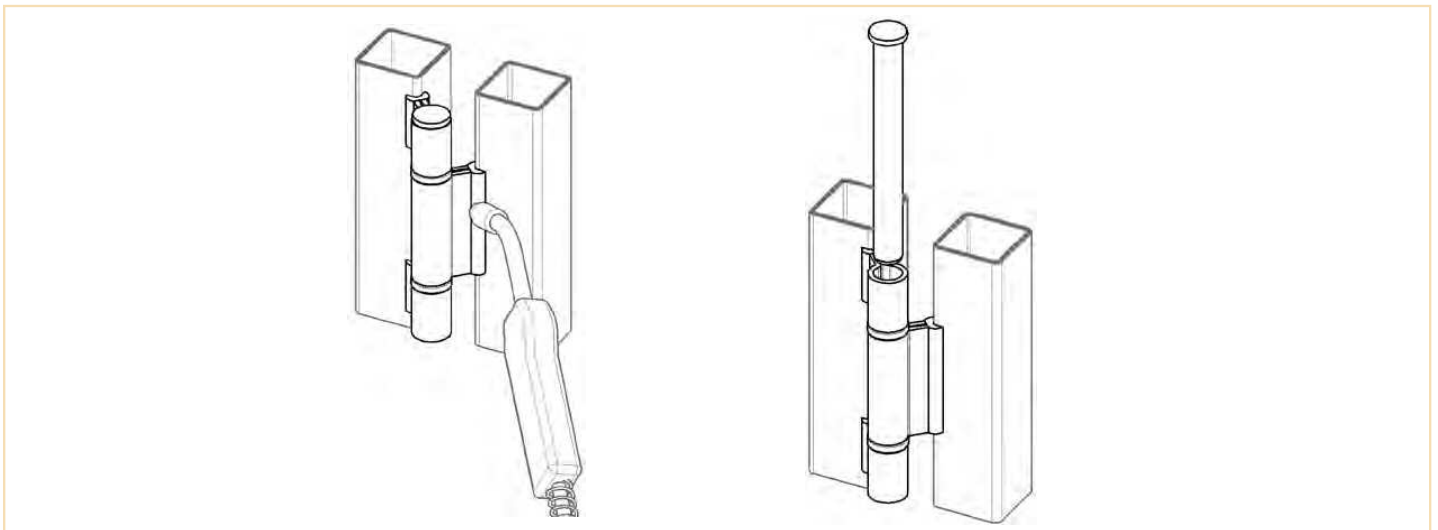
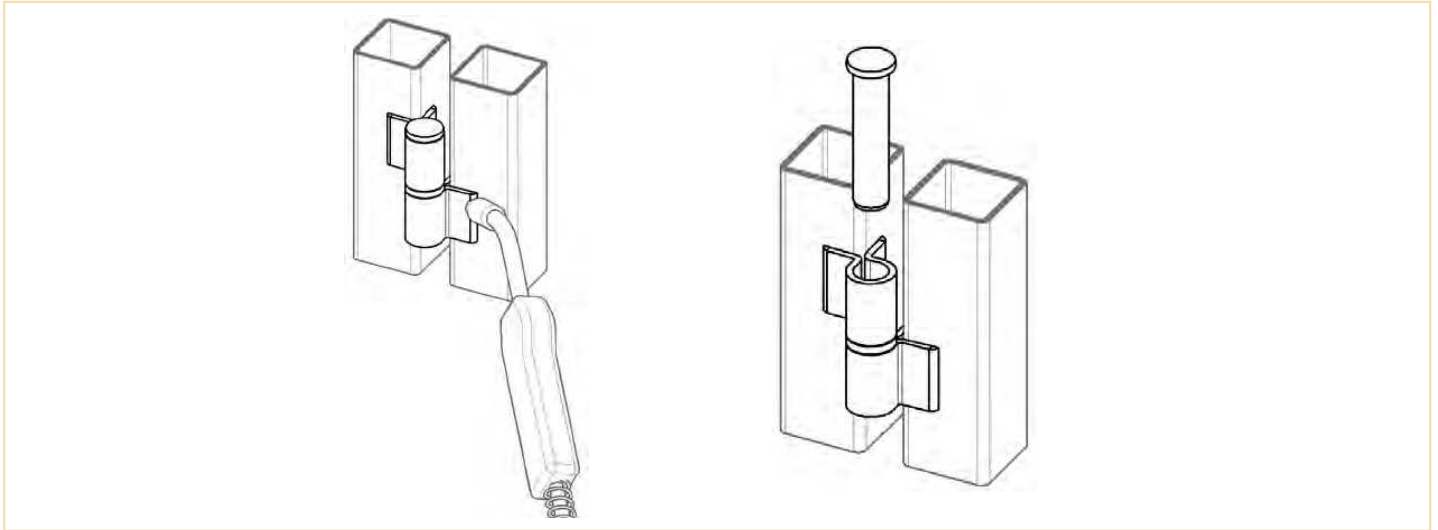
Cerniera gigante 4 ali con rondelle ottone  
Large hinge with 4 wings with extractable  $\varnothing 24$  pin  
петля разборная 4 части под сварку с латунной шайбой



cod.	mm.	pz/pcs	A	L
203.200	200	6	44	208
203.300	300	2	69	308

## APPLICATIVI

### Applications



## LEGENDA SIMBOLI

### Symbol description



SALDARE

#### COMPONENTE DA SALDARE\_COMPONENTS REQUIRING WELDING

- Realizzare una saldatura di dimensioni adatte a supportare le forze in gioco e con materiale d'apporto idoneo.
- The weld must be adequately sized to support the applied forces and with suitable electrode material.
- Rinforzare adeguatamente le zone d'attacco all'anta e/o alla struttura / telaio. • Adequately strengthen the areas anchoring the door and/or structure / frame.



CUSCINETTO

#### CUSCINETTO REGGISPINTA\_THRUST BEARING

- Carico assiale max. e manutenzione, vedi pag 24 • For max axial load and maintenance, see page 24
- Lubricate before installation. Use grease suited to the ambient conditions, avoid grease that tends to dry rapidly.



ACCIAIO

#### RONDELLA ACCIAIO\_STEEL WASHER

- Lubricate before installation. Use grease suited to the ambient conditions, avoid grease that tends to dry rapidly.



OTTONE

#### RONDELLA OTTONE\_BRASS WASHER

- Lubricate before installation. Use grease suited to the ambient conditions, avoid grease that tends to dry rapidly.



ACCIAIO

#### PERNO ACCIAIO\_STEEL PIN

- Lubricate before installation. Use grease suited to the ambient conditions, avoid grease that tends to dry rapidly.



OTTONE

#### PERNO OTTONE\_BRASS PIN

- Lubricate before installation. Use grease suited to the ambient conditions, avoid grease that tends to dry rapidly.